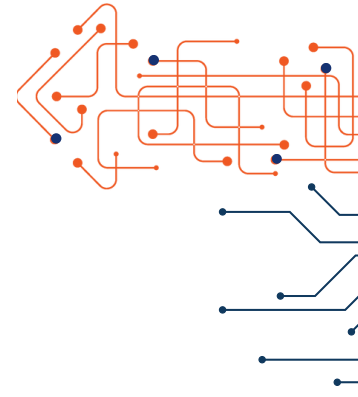


BeyondTrust Total Privileged Account and Session Management (PASM)



See it, centralize it, and secure it with Total PASM.

Almost every breach comes down to identities and their access. Privileged access traditionally presents the most risk, but increasingly, threat actors are also exploiting hidden and indirect Paths to Privilege™ that can allow them to escalate access and execute lateral movement. Modern privileged account and session management (PASM) capabilities are imperative for ensuring proper control, hygiene, and management of privileged identities and their access, as well as for addressing risky paths to privilege.

BeyondTrust's Total PASM solution is designed to help organizations reduce their privileged account and access-related risks, while achieving internal and external compliance requirements. Our Total PASM solution provides capabilities that surpass other solutions on the market, with deeper visibility, more granular controls, and centralized management.

With BeyondTrust, benefit from the most complete PASM solution. Find and onboard service accounts, create secure sessions for people and machines, and secure non-privileged employee passwords for business applications. Also manage passwords, accounts, keys, secrets, and more across your cloud, hybrid, on-premises, and OT environments. The BeyondTrust solution empowers you with a robust defense against unauthorized access, insider misuse, and potential breaches.

Unlock Powerful PASM Outcomes

Discover and Onboard Privileged Assets

Continuously identify and onboard privileged assets (web, cloud, virtual), privileged user accounts, service accounts, True Privileges™, DevOps secrets, RPA workflows, and SSH keys

Illuminate Risks

Pinpoint, report on, and address privileged passwords, vendors, remote access, and other security risks.

Automate Credential Management

Vault and rotate privileged credentials (passwords, SSH keys, etc.) and manage DevOps secrets. Eliminate embedded credentials in scripts and code.

Apply Powerful Session Management

Control and audit every privileged session—whether employee, vendor, on-premises, or remote.

Satisfy Audit & Compliance Requests

Leverage extensive privilege account, credential, and session analytics to simplify compliance (HIPAA, SOC, etc.) and benchmark tracking.

Client Success Stories

Premier Bankcard

“Between our larger cloud initiative and the Password Safe integrations with our other BeyondTrust solutions, adopting Password Safe seemed like a smart move—especially given our AWS migration. Password Safe could connect straight to the Privileged Remote Access device and, from there, go to AWS. It would make things easier and more seamless, offering a better experience for our vendor partners.” - David Lokke, Senior Systems Administrator

City of Midlothian

“With Privileged Remote Access, Password Safe, and Remote Support, we’ve ensured privileges aren’t left unchecked, preventing users from becoming entry points for attacks.” - Mike Weiss, Information Technology Director

To learn more or request a demo, visit <https://www.beyondtrust.com/products/total-pasm> or contact us at <https://www.beyondtrust.com/contact> to get solution pricing.